

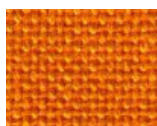
Revolving chair with functional aesthetical features, with a high backrest in constant contact with your back. With armrests. Non-deformable padding. Height adjusted with a gas lever.



## TECHNICAL SPECIFICATIONS CODE 161201

Depth	Seat depth	Width	Seat width	Backrest height	Seat height
63 cm	44 cm	54 cm	46 cm	96 / 109 cm	42 / 55 cm

## COLOURS



### FISIOTECH SRL

**Operating headquarters:** Via Toniolo, 44/E-F - 31028 Vazzola (TV) - ITALY

**Registered office:** Via Valdoni, 19 - 31013 Cimavilla di Codognè (TV) - ITALY

Tel. +39 0438470342 - Fax +39 0438478762 - mail : info@fisiotech.com - pec : fisiotech@emailsec.it

VAT Number IT 03765100262 - Rea TV 296956